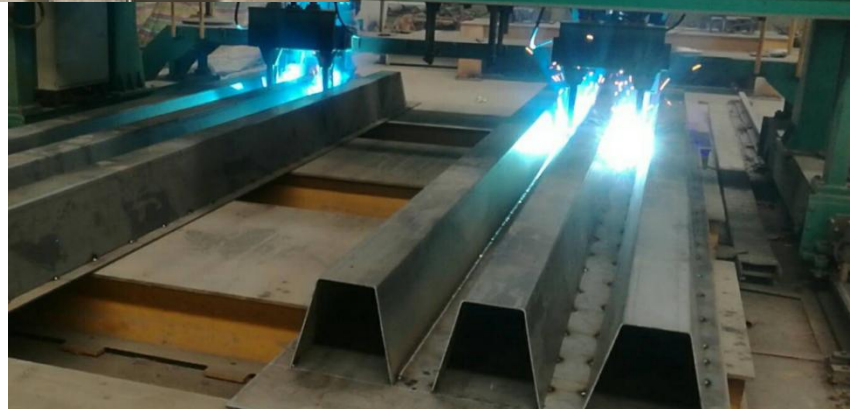


Pre-arch machine:

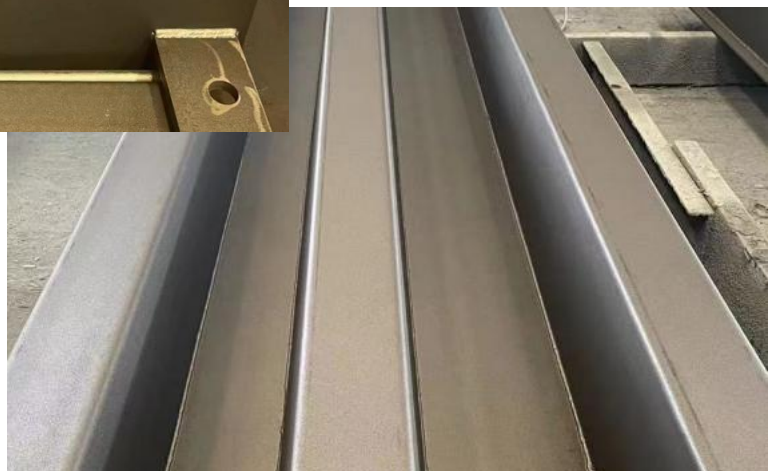
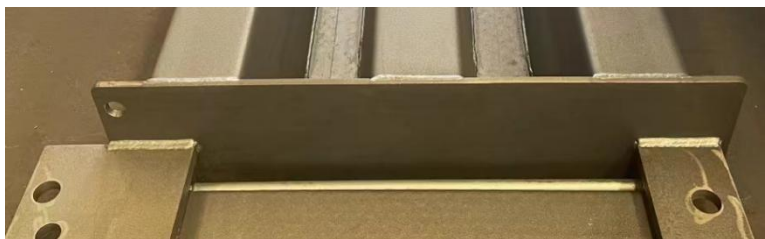
Mainly used in the welding process of the panel and U-beam on the truck scale, it can make the panel produce a certain arch to increase the bearing capacity, and ensure the strength and beauty of the scale body.

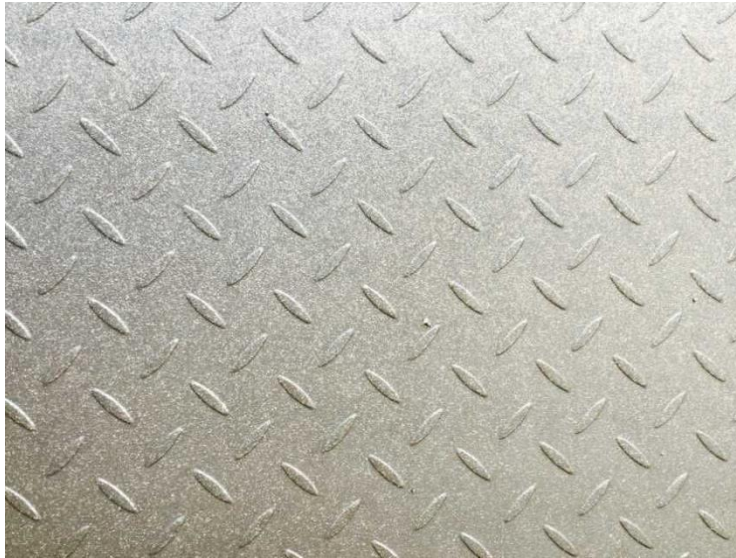


Standard fillet weld with no end, the minimum weld leg length is 8mm



Standard fillet weld with no end, the minimum weld leg length is 8mm





Exceptional rust and corrosion protection, outstanding resistance to wear.

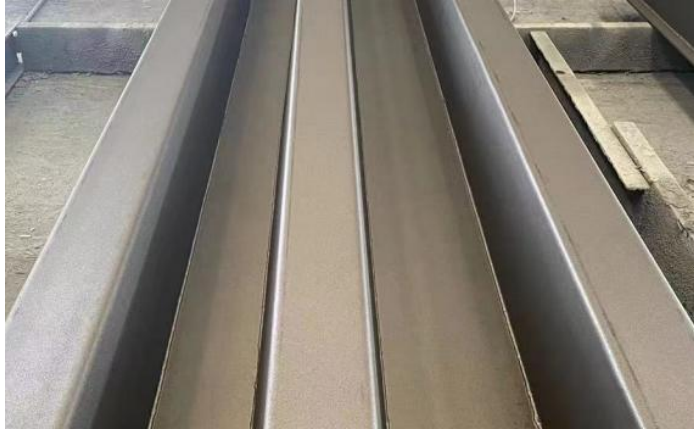
Rust protection process

Step 1: Sandblasting

External surfaces of all modules undergo complete sandblasting to remove any contaminants such as mill scale, welding gases, oil or other residue. We use a centrifugal steel shot blasting system which blasts a mixture of steel grit and steel shot simultaneously to remove contaminants. If the steel is not properly cleaned, paint will flake and wear away, diminishing its appearance, exposing the scale to the elements and shortening its lifespan. Although paint can initially hide much of this residue on a lower quality weighbridge, it will quickly appear once in the field. We use an intense cleaning process to remove all foreign materials and residue before painting to ensure proper bonding of the paint.



Sandblasting Cleaning: Sa2.5
Surface Roughness: 30~75_μm



Step 2: Protective coating

All non-visible steel surfaces are evenly sprayed with an asphalt emulsion coating to protect the steel from internal moisture due to high humidity, excessive rain or standing water under the scale.

Step 3: new environment-friendly underside paint

(TWO LAYERS PAINT)

Once the steel is properly cleaned and prepped, The surface of the scale body is sprayed with a new environment-friendly underside paint to ensure the anti-corrosion effect of the scale body;

Lanling brand paint

The paint thickness reaches 100-120μ

